


PANEL DESCRIPTIONS



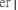
1. Tachometer Scale
2. Bar Tachometer
3. 1st row: Temperature meter.
4. 2nd row: Other functions display
5. RESET Button
6. MODE Button
7. LED indicator symbols

	Left direction indicator/Green		Engine oil / Red
	Main-beam headlamp/Blue		Neutral Gear /Green
	Right direction indicator/Green		Reverse Gear /Red
	Hazard Warning/ Red		Drive Gear /Green
	Parking/Green		Engine coolant temperature/ Red
	Direction indicator/Green		Rear fog lamp/Amber
	Flash Trailer/Green		Engine in out of use/Red

FEATURES

- LCD has 2 rows digital and an analogue bar-graphic tachometer displays with blue LEDs backlight.
- Total engine running timer is stored in memory as a maintain reminder, even when the power is off.
- Temperature range is suitable for both water and oil temperature.
- The design of engine rotation turns per signal is suitable for most engines.
- Adjustable RPM & temperature warnings and warning indicators.
- Includes temperature sensor kit.
- Vibration (8G) and mechanical shock (100G) tested.
- Water resistant tested 100%.
-

SPECIFICATIONS

FUNCTIONS	Symbols	SPECIFICATIONS	INCREMENTS	ACCURACY
Bar Tachometer		500-12,000 rpm	500 rpm	
Digital Tachometer	RPM	100-19,900rpm	100 rpm	
Shift Warning	RPM	100-19,900rpm	100 rpm	
Maximum Tachometer	MAX RPM	100-19,900rpm	100 rpm	
Temperature Meter		+40°C-150°C	1°C	+/- 1°C
Maximum Temperature		+40°C-150°C	1°C	+/- 1°C
Riding Time	RT	0.00'00"- 99:59'59"	1 Second	+/- 50PPM
Total Time	TT	9999'59"	1 Minute	+/- 50PPM

Power Input	DC 12V
Temperature Sensor	Thermo Sensor
Tachometer Input	CDI or Ignition Coil signal
Operation Temperature	-10°C - +80°C
Storage Temperature (Inner housing)	-25°C - +85°C
Dimensions	φ 64mm / H 40mm

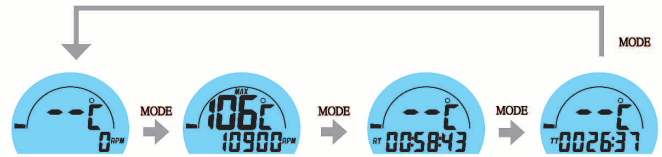
FUNCTIONS DESCRIPTIONS

- 1.Bar Graphic Tachometer : Each bar indicates 500RPM, the maximum RPM up to 17,500 RPM.
- 2.Radiator or Engine oil Temperature: $+40^{\circ}\text{C} \sim +150^{\circ}\text{C}$.
- 3.RT (Engine Running Timer): It counts engine running time from last Reset operation, press RESET button for 2 seconds to reset the data.
- 4.TT(Engine Total Running Timer): Calculates total operation time from the beginning of the Engine. The data is stored in memory, even when power is removed.
- 5.MAX RPM & Temperature: Displays highest RPM & Temperature from last reset operation. Press RESET button for 2 seconds to reset the data.
6. Shift Warning Setup: Press MODE button to RPM screen, pull up the throttle until the desired shift warning RPM and press RESET button

BUTTON OPERATIONS

MODE BUTTON

1. Press the MODE button to move all functions in loop sequence from one function screen to another when the RPM sensor does not detect any signal input.
2. LCD screen will automatically revert to Temperature Meter and Tachometer screen during operation movement, if no button usage for 10 seconds



RESET BUTTON

1. Press MODE button to the desired screen then press RESET button for 2 seconds to reset Maximum Temperature and RPM and RT data from stored values to zero.
2. TT data cannot be reset.



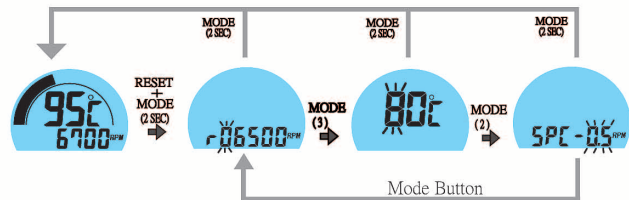
SHIFT WARNING RPM OPERATION

1. Press MODE button to the RPM screen; pull on the throttle until the desired shift warning RPM displayed.
2. Press RESET button to confirm and set up the shift warning RPM.
3. Bar-graphic tachometer will flash to warning you shift gear.



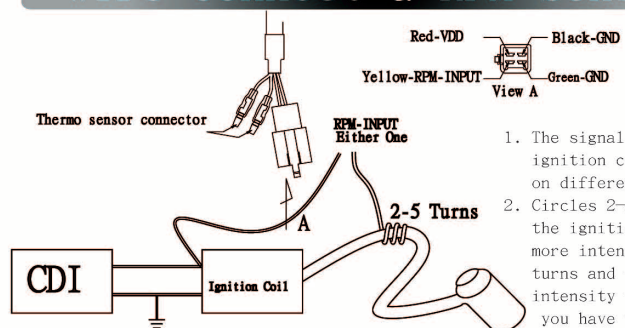
RPM, Temperature & Numbers of Engine Rotation SET UP

1. Setup operations include shift warning RPM, Temperature warning and numbers of engine rotation per signal. You have to set up step by step. The computer will automatic reversion to main screen if no button operation for 20 seconds at any setting screen.



2. Press both MODE & RESET buttons to go into setting screen. The setup logic is press RESET to add the flashing digit by one, press MODE button to confirm the setting and go to next digit or next screen to be set; press MODE button for 2 seconds at any setting screen to return to main screen.
3. It displays "rXXX00 RPM". Press RESET button to increase flashing digit by one; press MODE button to confirm digit setting and jump to next digit.
4. Press MODE button to warning temperature setting screen after completed shift warning RPM setting.
5. It displays "XX°C" symbol.
6. Press RESET button to increase flashing digit by one; press MODE button to confirm digit setting and jump to next digit. Press MODE button to go to the numbers of engine rotation per signal setting screen after set warning temperature.
7. It displays "SPC-X.X RPM", the default value is 1.0; there are 4 options: 1.0, 2.0, 3.0 and 0.5. It means the numbers of engine rotation per signal. For example the value 2.0 means the engine rotate 2 turns to output a signal.
8. Press RESET button to move in loop sequence from one to another value of the 4 values. Press MODE button to confirm the setting digit.
9. Press MODE button for 2 seconds to complete the setting process and go into the main screen.

Wire Connect & RPM Sensor



1. The signal intensity from ignition coil is dependent on different bikes.
2. Circles 2-5 turns around the ignition coil, the more intensity the less turns and the less signal intensity the more turns you have to circle.