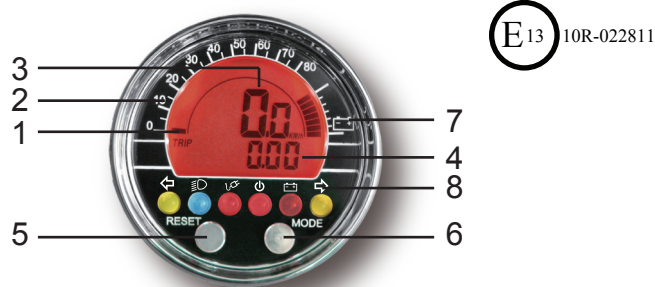


ACEWELL Electric Bike/Scooter Computer

ACE-2XXE User Manual



Thanks for purchasing the electric bike/scooter computer; this manual is specifically designed for ACE-2XXX-E series, which has different models, each model has different LED indicators. You may find that the photo has a set of LED indicators different from your computer, the photo is for reference only

PANEL DESCRIPTIONS

1. Bar Speed Scale
2. Bar Speed
3. Speed & Max. speed display
4. Other functions display
5. RESET Button
6. MODE Button
7. Voltage Meter
8. LED indicator symbols

FEATURES

- Multi-functional LCD Electrical Bike/Vehicle computer displays analogue and digital Speedometers, power gauge and one of other functions at the same time.
- Computer built-in 4 to 6 LED lights for different purpose indicators.
- Odometer and total riding timer are stored in memory, even when the power is off.
- Back light design and Odometer always be stored to memory follows CE regulation.
- Displays clock even when other functions is off.
- Wide wheel circumference setting rang: 1-3999mm.
- Metric/Empire unit option available.
- Water resistant tested 100%.

SPECIFICATIONS

FUNCTIONS	Symbol	ACE-21XXE	ACE-22XXE
Bar Speed Meter		2.5-80Km/H (50MPH)	5-125Km/H (78MPH)
Speed Meter	SPD	2.3-80.0Km/H (50MPH)	2.3-125.0Km/H (78.1MPH)
Maximum Speed Meter	MAX	2.3-80.0Km/H (50MPH)	2.3-125.0Km/H (78.1MPH)
Average Speed Meter	AVG	2.3-80.0Km/H (50MPH)	2.3-125.0Km/H (78.1MPH)
Trip Meter 1&2	TRIP 1/2	0.00-9999.99 Km (6249.99Miles)	0.00-9999.99 Km (6249.99 Miles)
Odometer	ODO	0.0 - 99999.9 Km 0.0- 62499.9 Miles	0.0 - 99999.9 Km 0.0- 62499.9 Miles
Riding Time	RT	0.00'00"- 99:59'59"	0.00'00"- 99:59'59"
Total Time	TT	9999H59'	9999H59'
Clock		0:00'00"-11H59'59"/23H59'59"	
Battery Gauge		1-7Bars, customize voltage	

Wheel Circumference setting: 1mm - 3999 mm (1 mm increment)
 Operation Temperature: -20°C - +70°C
 Speed Sensor: No Contact Magnetic Sensor.
 Storage Temperature: -25°C - +80°C

FUNCTIONS

: **Bar Graphic Speed meter**
 It displays bar graphic speed up to 125 Km/H or 78 MPH for ACE-22XXE and 80Km/H or 50 MPH for ACE-21XXE.

SPD: Speed Meter
 It displays digital speed meter up to 125.0 Km/H or 78.1 MPH for ACE-22XXE

and 80.0Km/H or 50.0 MPH for ACE-21XXE.

AVG: Average Speed Meter

The AVG is calculated by dividing the TRIP by the RT (riding time).

MAX: Maximum Speed Meter

Displays the highest speed achieved from the last Reset operation.

TRIP 1&2: Trip Meter 1&2

TRIP function accumulates trip distance since last RESET as long as bike/vehicle is moving.

ODO: Odometer

The ODO accumulates total distance as long as the electric bike/scooter is being ridden. The ODO data is always stored to memory even when the power is turned off.

RT: Riding Time

The RT totals the riding time from the last RESET operation.

TT: Total Time

The TT accumulates total time as long as the electric bike/scooter is being ridden. The TT data always be stored to memory even the power is removed.

: 12/24 hour Clock

It displays 12 or 24 hour current time.

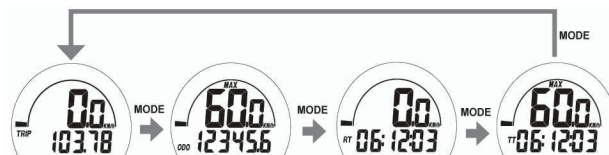
Battery Gauge:

- 1.The battery gauge has 7 bars to indicate how much power the gauge remains.
- 2.The 1st bar indicates the low voltage of the battery, the more bars shows more voltage, all 7 bars indicates maximum voltage of the voltage.
- 3.The last bar will flash to alert you to charging battery soon. MA

BUTTON OPERATION

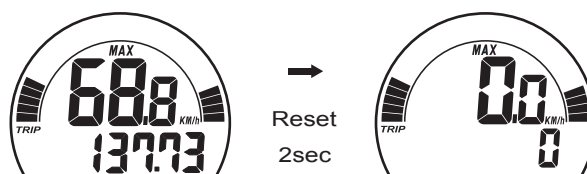
MODE BUTTON

- 1.Press the MODE button to move in loop sequence from one function screen to another
- 2.The LCD screen will convert to the screen of Speed meter and trip meter automatically during the riding, if the button operation is suspended for 10 seconds.



RESET BUTTON

- 1.Hold down the RESET button for 2 seconds at the function's screen desire to be reset. The computer will reset the TRIP, RT or MAX data from stored values to zero
- 2.It cannot reset ODO and TT data



WHEEL CIRCUMFERENCE TABLE

- 1.The details below have been calculated using following formula: Tire Diameter (inches) x 25.4(mm/inches) x 3.1416 = wheel circumference (in mm).
- 2.Identify the tire size of your electric bike/scooter when you need to change different tire size and key in the corresponding number shown in the following chart.

Tire Size	Circumference number (mm)	Tire Size	Circumference number (mm)	Tire Size	Circumference number (mm)
15 inch	1197	19 inch	1516	23 inch	1835
16 inch	1277	20 inch	1596	24 inch	1915
17 inch	1357	21 inch	1676	25 inch	1995
18 inch	1436	22 inch	1756	26 inch	2075

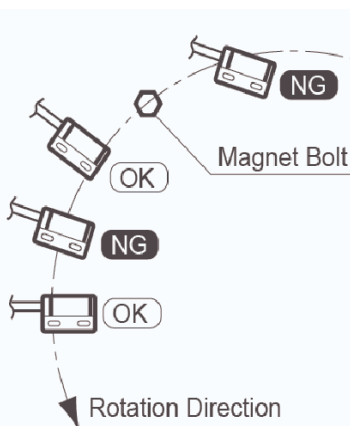
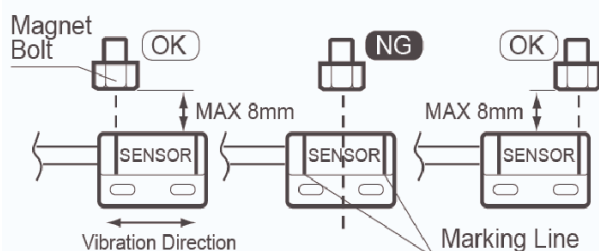
Installation

Reed Speed Sensor and Magnet:

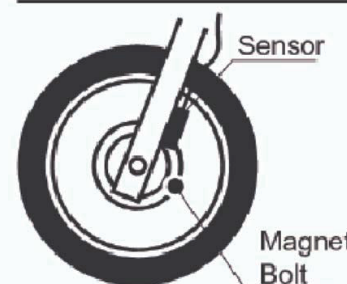
- 1.This sensor is universal sensor for motorcycle, find a rotating part to install magnet (for example disk, sprocket or driveshaft) and a location to install the sensor where it can be aligned to the magnet.
- 2.Align the center of the magnet to either of the sensor marking lines or the side of the sensor. The magnet must not travel down the body of the sensor
- 3.Installing the sensor parallel to the vibration direction creates optional anti-vibration effect.
- 4.Make sure the gap between the magnet and the sensor is within 8mm.

Attention Speed Sensor & Magnet Installation

- 1.Align the center of the magnet to either of sensor marking line.
- 2.Installing the sensor parallel to the vibration direction creates optimal anti-vibration effect.
- 3.Make sure the gap between the magnet and the sensor is within 8mm.

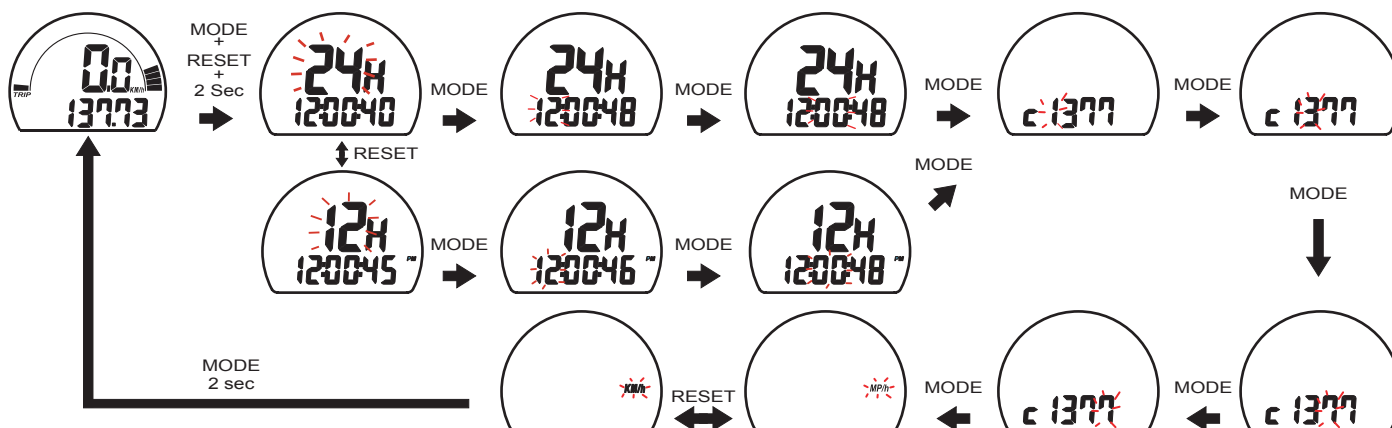


Speed Sensor & Magnet Installation



Clock, Wheel and Units SETUP

- 1.Setup operations include 12/24HR clock, wheel circumference and units. You have to set up step by step. The computer will automatic reversion to main screen if no button operation for 20 seconds at any setting screen.
- 2.Press both MODE & RESET buttons to go into setting mode.
- 3.In setting mode, each press of the RESET button increments the flashing digit by 1 or converts units. Press MODE button to confirm the digit setting and warning jump to next digit or next setting screen to be set. Press MODE button for 2 seconds at any setting screen to finish the setting and go to normal mode.
- 4.It displays "12 or 24H and XX:XX-XX" symbols and AM/PM in case you select 12H. Operates buttons as descriptions of item 3 to finish bar-graphic speedometer scale setting and jump to wheel circumference setting screen.
- 5.It displays "cXXX", "c" means "Circumference", following 4 digits is circumference of original tire; flashing digit is digit to be reset. Operates buttons as descriptions of item 3 to finish bar-graphic speedometer scale setting and jump to units setting screen.
- 6.It displays KM/h or M/h, each press of RESET button converts unit; press MODE button to confirm unit setting and jump to clock setting screen or hold the MODE button for 2 seconds to complete the setting and return to normal mode.



PRECAUTION

- 1.Do not use chemical solvent, thinner to clear the housing and transparent lens to avoid damage of lens and housing.
- 2.The LCD will display slow when temperature below 0°C/32°F, unit will return to normal state when the temperature rises.