

ACE-25/26xx ATV/Scooter Computers User's Manual



Thanks for purchasing the Acewell's ATV/Scooter computer, this manual is designed for ACE-25XX/26XX series. Different model has different LED indicators; a fuel meter is optional, but all other functions are the same. You may find that the photo above has a set of LED indicators which different from your computer, the photo is for reference only.

PANEL DESCRIPTIONS

- | | |
|--|----------------------------|
| 1. Bar Speed Scale | 4. Other functions display |
| 2. Bar Speed | 5. RESET Button |
| 3. Speed & Max. speed display | 6. MODE Button |
| 7. Fuel Meter (for model with fuel meter only) | |
| 8. LED indicator symbols | |

	Left direction indicator/Green		Engine oil / Red
	Main-beam headlamp/Blue		Neutral Gear /Green
	Right direction indicator/Green		Reverse Gear /Red
	Hazard Warning/ Red		Drive Gear /Green
	Parking/Green		Engine coolant temperature/ Red
	Direction indicator/Green		

FEATURES

- Computer housing includes 4-6 LED lights for different control lights.
- Odometer and LED backlight conforms to CE regulation.
- Universal wheel circumference setting: 1-3999mm
- Metric/ British system option available.
- Waterproof design.

SPECIFICATIONS

FUNCTIONS	Symbol	SPECIFICATIONS	INCREMENTS	ACCURACY
Bar Speed Meter		0-125KM/h (80M/h)	5 KM/h	
Speed Meter		2.3-125.0KM/h (78.1M/h)	0.1 KM/H or M/H	+/-1% or +/-0.1(KPH/MPH)
Maximum Speed Meter	MAX	MAX 2.3-125.0KM/h (78.1M/h)	0.1 KM/H or M/H	+/-1% or +/-0.1(KPH/MPH)
Average Speed Meter	AVG	AVG 2.3-125.0KM/h (78.1M/h)	0.1 KM/H or M/H	+/-1% or +/-0.1(KPH/MPH)
Trip Meter TRIP	TRIP	0.00-9999.99 Km (6249.99 Miles)	0.01 Km or Miles	+ 0.1%
Odometer ODO	ODO	0.0 - 99999.9 Km (0.0- 62499.9 Miles)	0.01 Km or Miles	+ 0.1%
Riding Time RT	RT	0'00"00"- 99:59'59"	1 Second	+ 50PPM
Total Time TT	TT	9999H59'	1 Minute	+ 50PPM

Speed Sensor: No Contact Magnetic Sensor.
 Wheel Circumference setting: 1mm - 3999 mm (1 mm increment)
 Operation Temperature : -10°C - +70°C
 Storage Temperature : -25°C - +80°C

FUNCTIONS

BAR SPD: Bar Graphic Speed meter

It displays bar graphic speed up to 125 Km/H or 78 Mile/H

SPD: Speed Meter

It displays digital speed meter up to 125.0 Km/H or 78.1 Mile/H

AVG: Average Speed Meter

The AVG is calculated by dividing the TRIP by the RT (riding time).

MAX: Maximum Speed Meter

Displays the highest speed achieved from the last Reset operation.

TRIP: Trip Meter

The TRIP function accumulates total distance data from the last reset for as long as the ATV is being ridden.

ODO: Odometer

The ODO accumulates total distance as long as the ATV is being ridden. The ODO data is always stored to memory even when the power is turned off.

RT: Riding Time

The RT totals the riding time from the last RESET operation.

TT: Total Time

The TT accumulates total time as long as the ATV is being ridden. The TT data always be stored to memory even the power is removed.

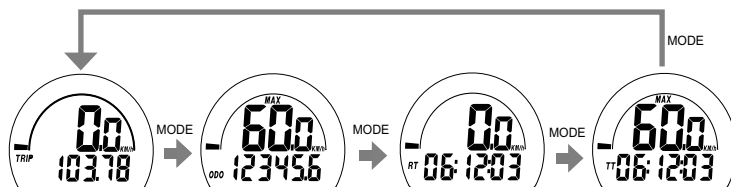
Fuel Level (For models with this function only.)

The fuel level has 7 bars to indicate how much fuel remains. The last bar will flash to alert you to low fuel. MA

BUTTON OPERATION

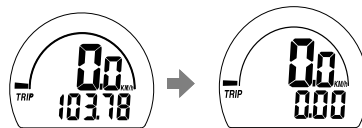
MODE BUTTON

1. Press the MODE button to move in loop sequence from one function screen to another
2. The LCD screen will convert to the screen of Speed meter and trip meter automatically during the riding, if the button operation is suspended for 10 seconds.



RESET BUTTON

1. Hold down the RESET button for 2 seconds at the function's screen desire to be reset. The computer will reset the TRIP, RT or MAX data from stored values to zero
2. It cannot reset ODO and TT data



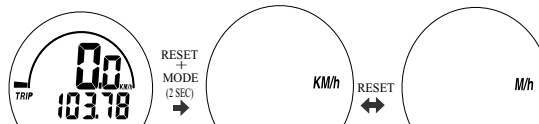
WHEEL CIRCUMFERENCE TABLE

1. The following table is calculated by the formula of Tire Diameter (inch) x 25.4(mm/inch) x 3.1416 = wheel circumference (in mm).
2. Identify the tire size of your ATV when you need to change different tire size and key in the corresponding number shown in the following chart.

Tire Size	Circumference number (mm)	Tire Size	Circumference number (mm)	Tire Size	Circumference number (mm)
15 inch	1197mm	19 inch	1516mm	23 inch	1835mm
16 inch	1277mm	20 inch	1596mm	24 inch	1915mm
17 inch	1357mm	21 inch	1676mm	25 inch	1995mm
18 inch	1436mm	22 inch	1756mm	26 inch	2075mm

UNIT & WHEEL CIRCUMFERENCE SETTING

1. Push and hold both MODE & RESET buttons for 2 seconds to go into the unit- setting screen.



2. It displays KM/h or M/h. Each press of the RESET button converts the unit.
3. Press the MODE button to confirm the unit and go into the wheel circumference setting screen.
4. It displays cXXX, the "c" means Circumference, it follows 4 digits are the circumference your original tire size, a flashing digit is the digit to be set.
5. Each press the RESET key to add the digit by 1, press the Mode key to confirm the setting digit and jump to the next digit.
6. Push and hold the Mode key for 2 second to complete the setting and return to main screen.
7. The setting screen will return to main screen if your do not operate any key for more 20 seconds.

